



13J33LE 13J33LE  
EVO

by  notilo plus

---

# QUICK START GUIDE

Sep-20

# Table of Content

<b>DRONE FIRST START UP .....</b>	<b>1</b>
1. DRONE START UP .....	1
2. CONNECT TO THE IBUBBLE APP .....	1
3. DOWNLOAD THE UPDATE .....	2
4. UPDATE THE DRONE .....	2
<b>FOLLOW MODE .....</b>	<b>3</b>
1. DRONE START UP .....	3
2. PREPARE TO DIVE .....	4
3. AT THE END OF THE DIVE .....	4
<b>ROV MODE .....</b>	<b>5</b>
1. DRONE AND EXPLORER CABLE START UP .....	5
2. CONNECTION TO THE IBUBBLE APP .....	6
3. START THE EXPLORATION .....	7
4. AT THE END OF THE EXPLORATION .....	8

START UP

FOLLOW MODE

ROV MODE



## DRONE FIRST START UP

For the first start up, the IBUBBLE drone needs an update.  
Please follow the 4 following steps.

### 1. DRONE START UP

Required Equipment : the drone with its remote and battery, a device (smartphone or JXD Controller)

Do not forget to fully charge all the equipment: battery + remote + the phone

- Place the battery inside the drone
  - Unscrew the **battery compartment** under the drone.
  - Place the **battery** inside the compartment.
  - A slight “bip” confirms the battery is in position.
  - Screw the **cover until tight**.
- Turn on the IBUBBLE drone
  - Turn on the **drone’s remote** by pressing the “Selec.” button on the top of the remote.
  - When the “**Notilo Plus**” appears on the screen, **press the two side buttons** to enter the bootloader menu
  - If you missed the moment, turn off the remote by pressing the 3 buttons at the same time and start again.



- When the **bootloader menu** appears on the screen, put the remote on the drone.  
Do not remove the remote until the end of the setting up process.

### 2. CONNECT TO THE IBUBBLE APP

- Download the iBubble App  
Available on App store and Google Play Store

- Open the IBUBBLE App on the device.

- Register your iBubble drone in the App  
Your device must be connected to internet

- Scan the **QR Code** on the drone’s Box or
- Write manually the drone’s serial number

Drone  
DRONE ID: 30391

B123EBD12345

STEP 0/8 Scan your iBubble’s QR code (on the label stuck on the box or on your QuickStart Guide) in the frame below.

STEP 1/9 Find your iBubble serial number starting by B827EB on the label stuck on the box or on your QuickStart Guide and enter it below

SERIAL NUMBER\*

Next

Try to scan the QR code again

QR Code not found or not working?

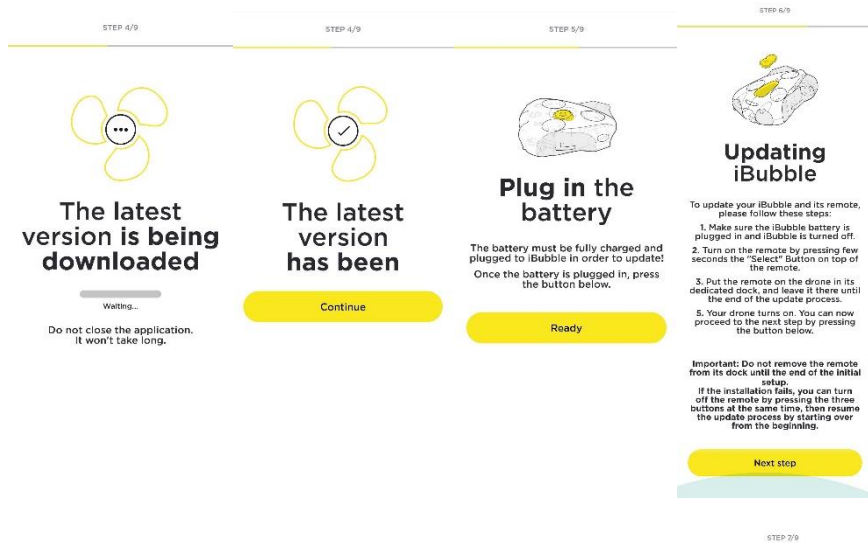
If you do not have the QR code anymore, you will find your serial number in the WiFi name of the drone.  
iBubble-**B827EBXXXXXX**

The drone is registered when the screen indicated “Your iBubble is now registered”.  
You can enter your information and accept the terms.



### 3. DOWNLOAD THE UPDATE

1. The latest version of the firmware will download  
The App will then ask you to turn on the drone to update it. Select "Ready" and "Next step".



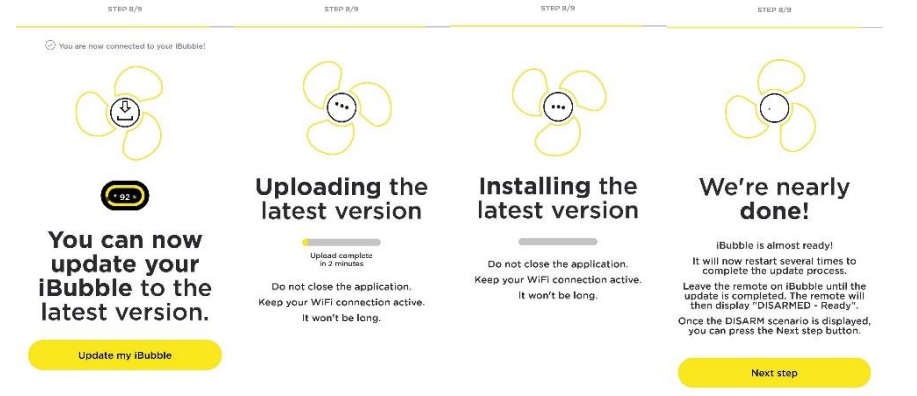
### 4. UPDATE THE DRONE

1. Connect the device to the drone's WiFi.  
*The drone's WiFi signal under the following format "iBubble-B827EBXXXXX" If you do not detect the WiFi signal bring the device closer to the drone.*



### 2. Update the drone

Once you are connected the app invite you to update the drone



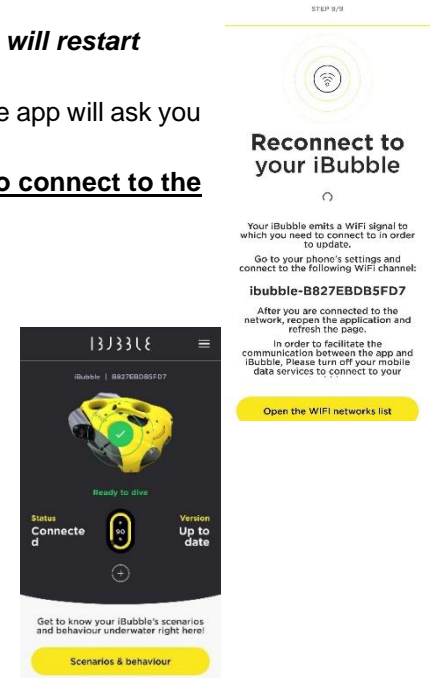
**At the end of the process the drone will restart**

It can take few minutes. During that time, the app will ask you to reconnect to the WiFi's drone.

**As the drone is restarting it is not able to connect to the app. Be patient.**

When the drone will be ready it will update the remote still on the drone.

At the end, the remote indicates "Disarmed Ready" and you can see the drone's status on the iBubble App.





## FOLLOW MODE

The drone autonomously follows the diver

To dive with the iBubble drone, please follow the 3 following steps.

Required Equipment : the drone with its remote and battery.

Do not forget to fully charge all the equipment: battery + remote.

**Caution**

- The diver must enter in the water before the drone or at the same time
- Do not throw the drone in the water.
- Do not activate / Arm the drone out of water.
- When activated, the drone emits a sound signal and position itself at a depth of 50cm to 1m. Keep a safe distance.
- Do no immerse the drone in water less than 1m deep.
- Obstacle avoidance is deactivated between 0 and 2m deep. You are responsible of the drone's movements.
- **The drone must be disarmed before any handling (put in/out of the water).**
- **In case of emergency immediately disarm the drone.**



## 1. DRONE START UP

1. Place the battery inside the drone
  - **Unscrew the battery compartment** under the drone.
  - **Place the battery** inside the compartment.
  - A slight "bip" confirms the battery is in position.
  - **Screw the cover until tight.**

## 2. Turn on the IBUBBLE drone

- **Turn on the drone's remote** by pressing the "Selec." button on the top of the remote.
- **Put the remote on the drone.**  
Do not remove the remote until the end of the starting up process.



- The drone turns on and test all its components (lights activation, propellers, sound signal).

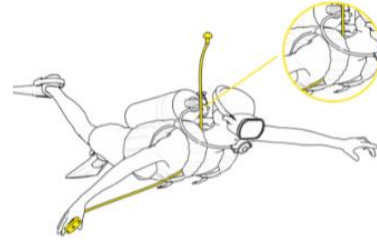


At the end of process, the drone's remote indicates "Disarmed Ready" and the front green LED is constant.

## 2. PREPARE TO DIVE

### 1. Position the remote on the diver

- The remote in the hand.
- The transmitter at the back of the head.



*The transmitter must float around 20cm above the diver's head to ensure drone's detection in the water.*

### 2. Going to the water

- First the diver.
- Then the drone.
- The diver can then activate a scenario with the "Scen." menu on the remote.



### **Caution**

When activated, the drone emits a sound signal and position itself at a depth of 50cm to 1m. **Keep a safe distance.**

## 3. AT THE END OF THE DIVE

### 1. Bring the drone back to the surface

- **Disarm the drone** by choosing « **Disarmed** » scenario or by pressing simultaneously both external buttons on the remote.
- Bring back the drone to the surface.
- **The diver gets out of the water after the drone.**

### 2. Turn off the drone

- Turn off the drone's remote by pressing simultaneously the three buttons
- Put the remote on the drone
- The drone will flashes its lamps
- Remove the remote from the drone
- The drone will turn off.



### 3. Rinse the drone with clear water.

Thanks to a jet water stream or by immersing the drone in a water container.

### 4. Remove the battery.

Put it in charge for the next exploration.

### 5. Let the drone dry before storage.



# IBUBBLE EVO

notilo plus

# IBUBBLE EVO

START UP


## ROV MODE

You control the drone from the surface

To control the drone in ROV Mode, please follow the 4 following steps.

**Required Equipment :** the drone with its remote and battery, the Explorer cable & WiFi Reel, a device (smartphone or JXD Controller)




 Do not forget to fully charge all the equipment: battery + remote + Explorer cable & WiFi Reel + device

### **Caution**

- Do not throw the drone in the water.
- Do not activate / Arm the drone out of water.
- When activated, the drone emits a sound signal and position itself at a depth of 50cm to 1m.
- Do no immerse the drone in water less than 1m deep
- In ROV Mode the obstacle avoidance is deactivated. You are responsible of the drone's movements.
- **The drone must be disarmed before any handling (put in/out of the water).**
- **In case of emergency immediately disarm the drone.**

## 1. DRONE AND EXPLORER CABLE START UP

### 1. Place the battery inside the drone


- **Unscrew the battery compartment** under the drone.
- **Place the battery** inside the compartment.
-  A slight "bip" confirms the battery is in position.
- **Screw the cover until tight.**

### 2. Connect the Explorer cable & WiFi Reel to the drone

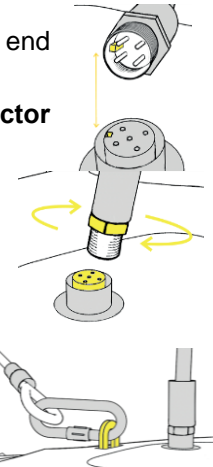
- **Unscrew the two black caps** on the drone and at the end of the Explorer cable.
- **Put the Explorer cable on the drone's connector** according to the guide.
- **Screw manually the ring.** There is no need to use strength.

If it does not screw easily, check the position of the cable on the drone's connector.


**Do not use any tool to screw the ring.**

-  *Screw the two black caps together to avoid them to hang.*

- **Secure the cable on the drone** with the carabiner.



### 3. Turn on the Explorer cable & WiFi Reel

- **Press once the ON** button and wait few seconds.
-  The LED flashes once in white then quickly in blue.



FOLLOW MODE

ROV MODE



#### 4. Turn on the IBUBBLE drone

- Turn on the drone's remote by pressing the "Selec." button on the top of the remote.
  - Put the remote on the drone.
- Do not remove the remote until the end of the setting up process.



The drone turns on and test all its components (lights activation, propellers, sound signal).



The Explorer cable & WiFi Reel is connected to the drone when the blue LED on the WiFi Reel flashes slowly.

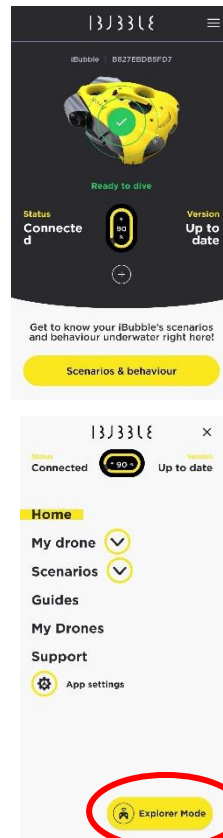
## 2. CONNECTION TO THE IBUBBLE APP

### 1. Connect the iBubble App in WiFi with the drone

- The drone's WiFi signal under the following format "iBubble-B827EBXXXXX". If you do not detect the WiFi signal bring the device closer to the drone.



The App displayed the drone's status.

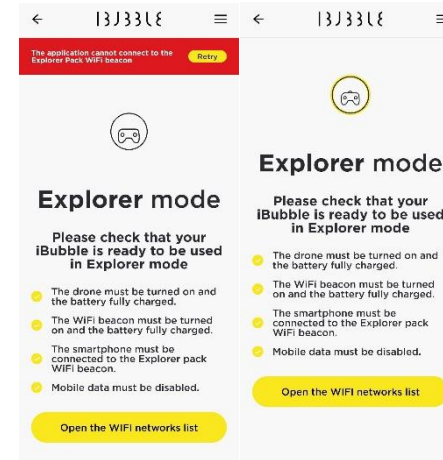


### 2. Start the Explorer Mode

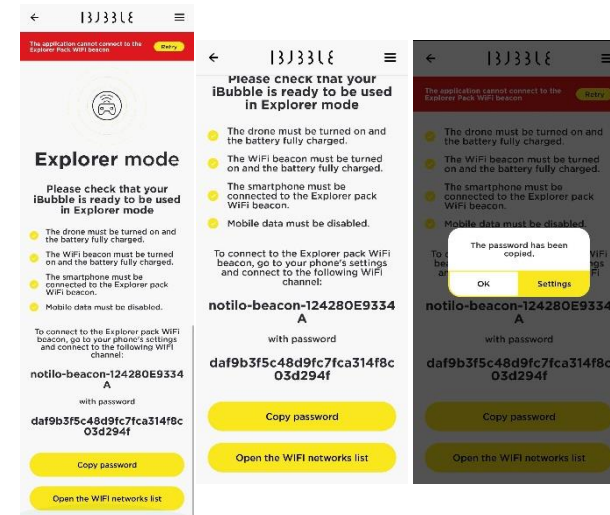
- Access the Menu of the App by selecting the three lines at the top right of the screen
- At the bottom of the menu choose "Explorer Mode"

### 3. The App invites you to connect to the Explorer Cable & WiFi Reel

- If there is a red banner, check you WiFi connection, you should be connected in WiFi to the drone.



- The App then display the name of the beacon and the password
- Copy the password





- Access the WiFi parameters of the device and **connect to the Explorer Cable & WiFi Reel**

➔ The Explorer Cable & WiFi Reel signal is under the following format "iBubble-beacon-XXXXXX".

- **Paste the password** when asked



Come back to the iBubble App, you can now **see the live video from the drone.**



### 3. START THE EXPLORATION

Remove the drone's remote from the drone. You would not need it until the end of the exploration.



#### 1. Secure the Explorer cable & WiFi Reel to the ground

To avoid it to be carried away by the drone.

#### 2. Put the drone in the water

- **The carabiner is properly attached to the drone.**
- **The drone is disarmed before to be handle.**

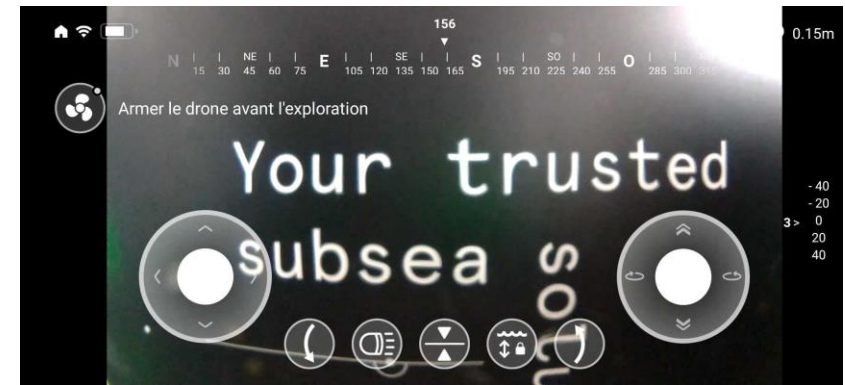


#### 3. Arm/Activate the drone

- On the screen with the propeller symbol.

#### 4. Start the Exploration

- Use the joystick and the commands on the phone to control the drone.



Pitch down    Lights    Reset Pitch    Block Depth    Pitch up

## 4. AT THE END OF THE EXPLORATION

### 1. Bring back the drone to the surface

- **Disarm the drone** with the device, selecting the propellers symbol.
- **Pull out the cable's part attached to the drone with the carabiner.**

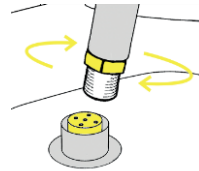
### 2. Turn off the drone

- Turn off the drone's remote by pressing simultaneously the three buttons
- Put the remote on the drone
- The drone will flash its lamps
- Remove the remote from the drone
- The drone will turn off.



### 3. Disconnect the drone and the Explorer cable & Wifi Reel.

- **Dry the connectors.**
- **Unscrew manually the ring.** There is no need to use strength.  
If it does not screw easily, check the position of the cable on the drone's connector. **Do not use any tool to screw the ring.**
- Unhook the carabiner.
- Dry the inside of the connectors and screw back the black caps.



### 4. Turn off the Explorer cable & Wifi Reel

- **Long press the ON button and wait few seconds.**  
🔔 The LED becomes orange then red and shut down.



### 5. Rinse the drone with clear water.

Thanks to a jet water stream or by immersing the drone in a water container.

### 6. Remove the battery.

Put it in charge for the next exploration.

### 7. Let the drone dry before storage.



notilo plus

[support@notiloplus.com](mailto:support@notiloplus.com)

[www.support.ibubble.camera](http://www.support.ibubble.camera)